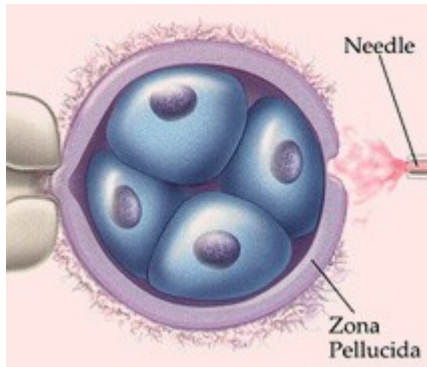


ICSI

About ICSI (Intracytoplasmic sperm injection)



The technique involves very precise maneuvers to pick up a single live sperm and inject it directly into the center of a human egg. The procedure requires that the female partner undergo ovarian stimulation with fertility medications so that several mature eggs develop (IVF). These eggs are then aspirated through the vagina, using vaginal ultrasound, and incubated under precise conditions in the embryology laboratory. The semen sample is prepared by centrifuging (spinning the sperm cells through a special medium).

This solution separates live sperm from debris and most of the dead sperm. The micromanipulation specialist picks up the single live sperm in a glass needle and injects it directly into the egg.

Through the ICSI procedure, many couples with difficult male factor infertility problems have achieved pregnancy at Mayo Test Tube Baby Center. Fertilization rates of 70-80% (of all eggs injected) are currently being achieved, and pregnancy rates are comparable to those seen with IVF in couples with no male factor infertility.